



Advancing Sustainable Communities in Metro Boston:

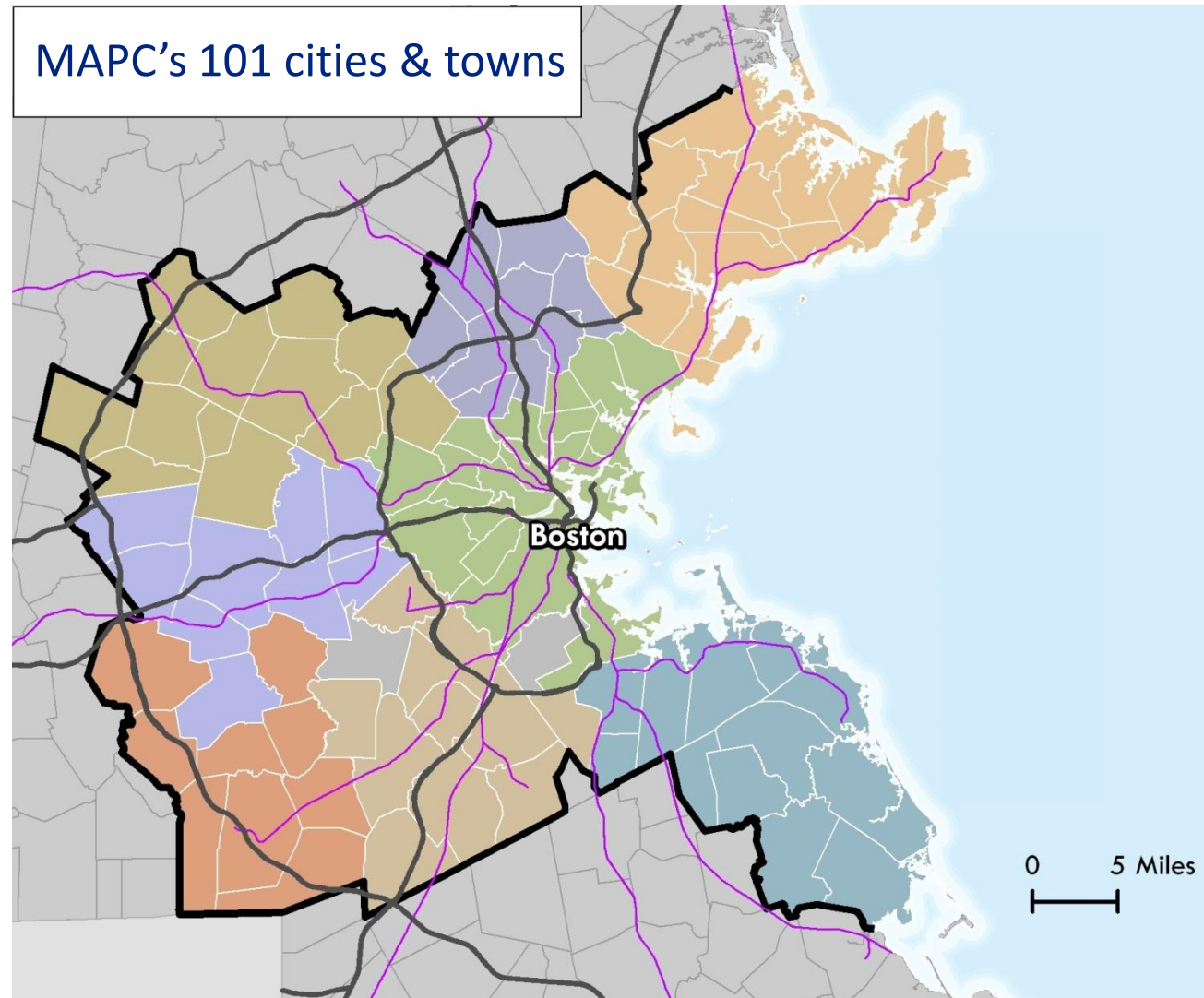
Engagement Tools & Strategies

Amy Cotter | Metropolitan Area Planning Council | January 29, 2015



As of 2010, our region had:

- Nearly 3.2 million residents
- 1.8 million jobs
- 1,440 square miles



MetroFuture: By 2030, we will...



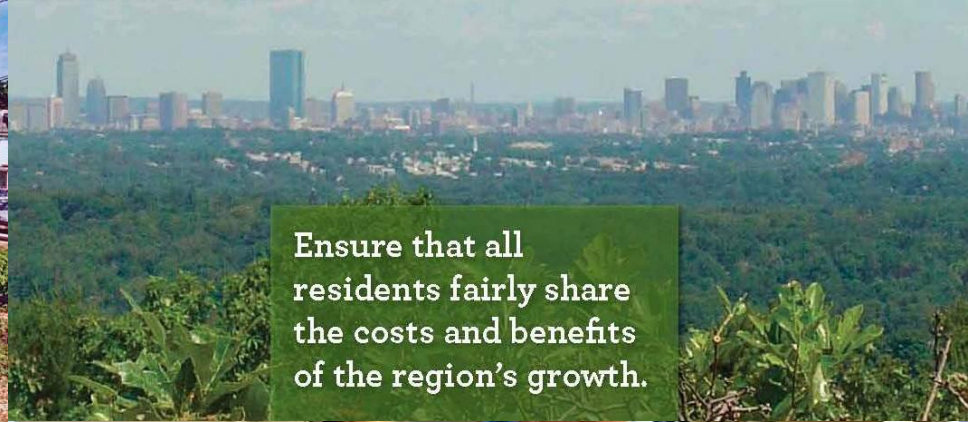
Be responsible stewards of our resources, passing on an environmentally, financially, and socially sustainable region to our children.



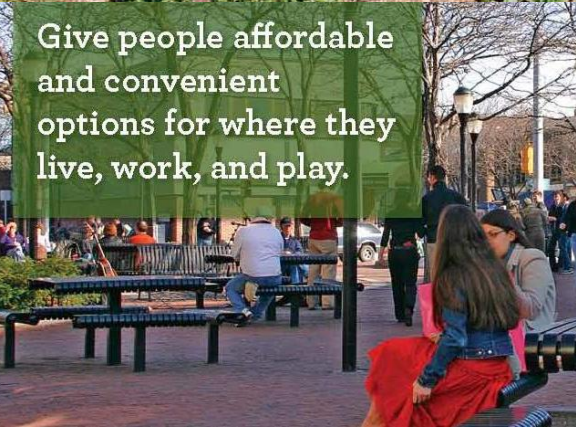
Involve more people in making the decisions that shape their lives.



Build safe, healthy, and welcoming communities.



Ensure that all residents fairly share the costs and benefits of the region's growth.



Give people affordable and convenient options for where they live, work, and play.



Create a world-class region that is vibrant, competitive, and connected.

Implementation Requires...

- Local zoning changes
- Local, state and federal investment in catalytic projects
- Innovation in public management
- Public-private-philanthropic partnerships
- Preservation of the region's assets, from affordable housing units to farmland
- Active, engaged new leaders
- Policy change
- Political will
- And more....





REFRAMING THE WORLD



ABOUT US ▾

WHAT WE DO ▾

NEWS AND EVENTS ▾

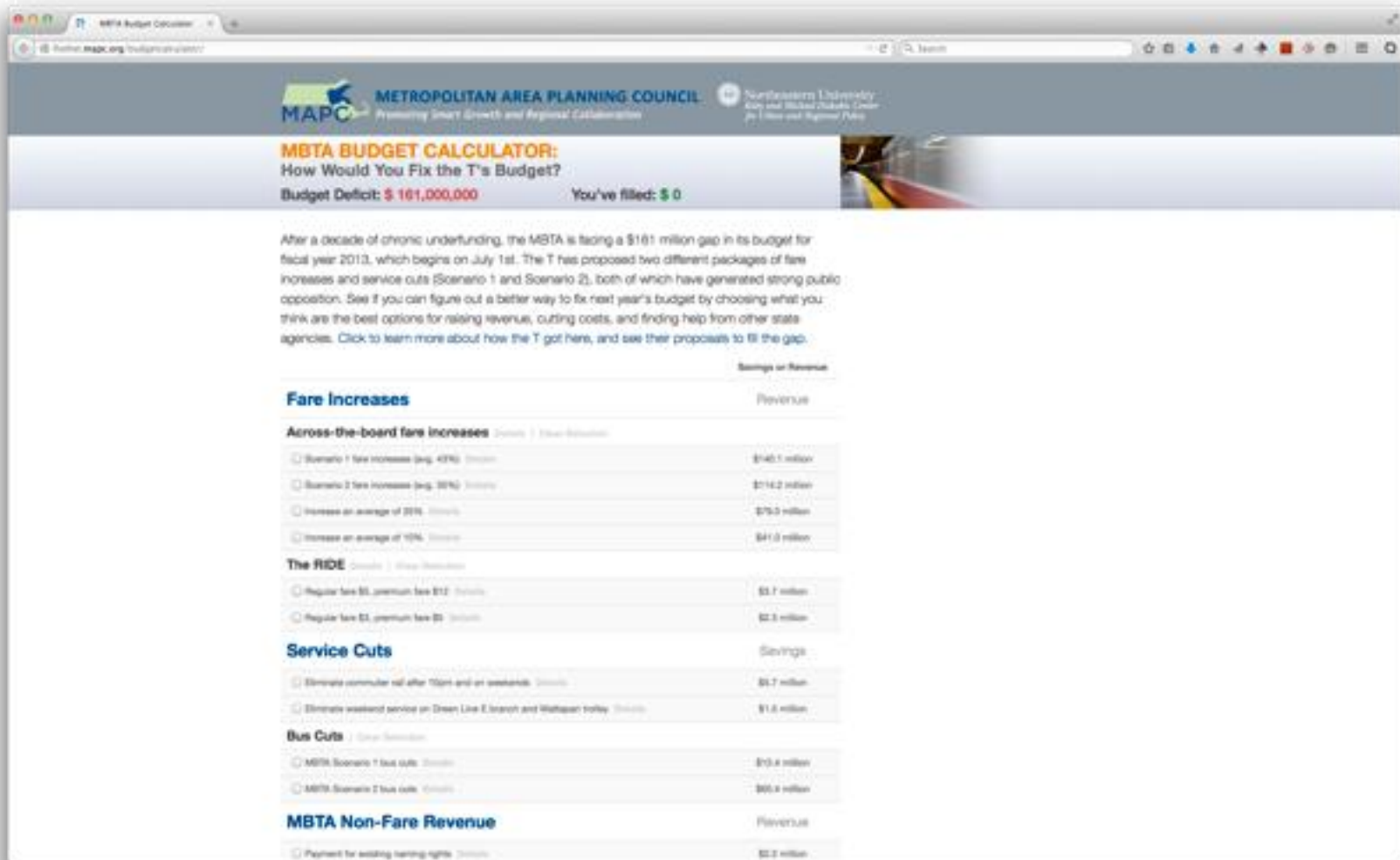
SUPPORT US ▾





Community Plan It





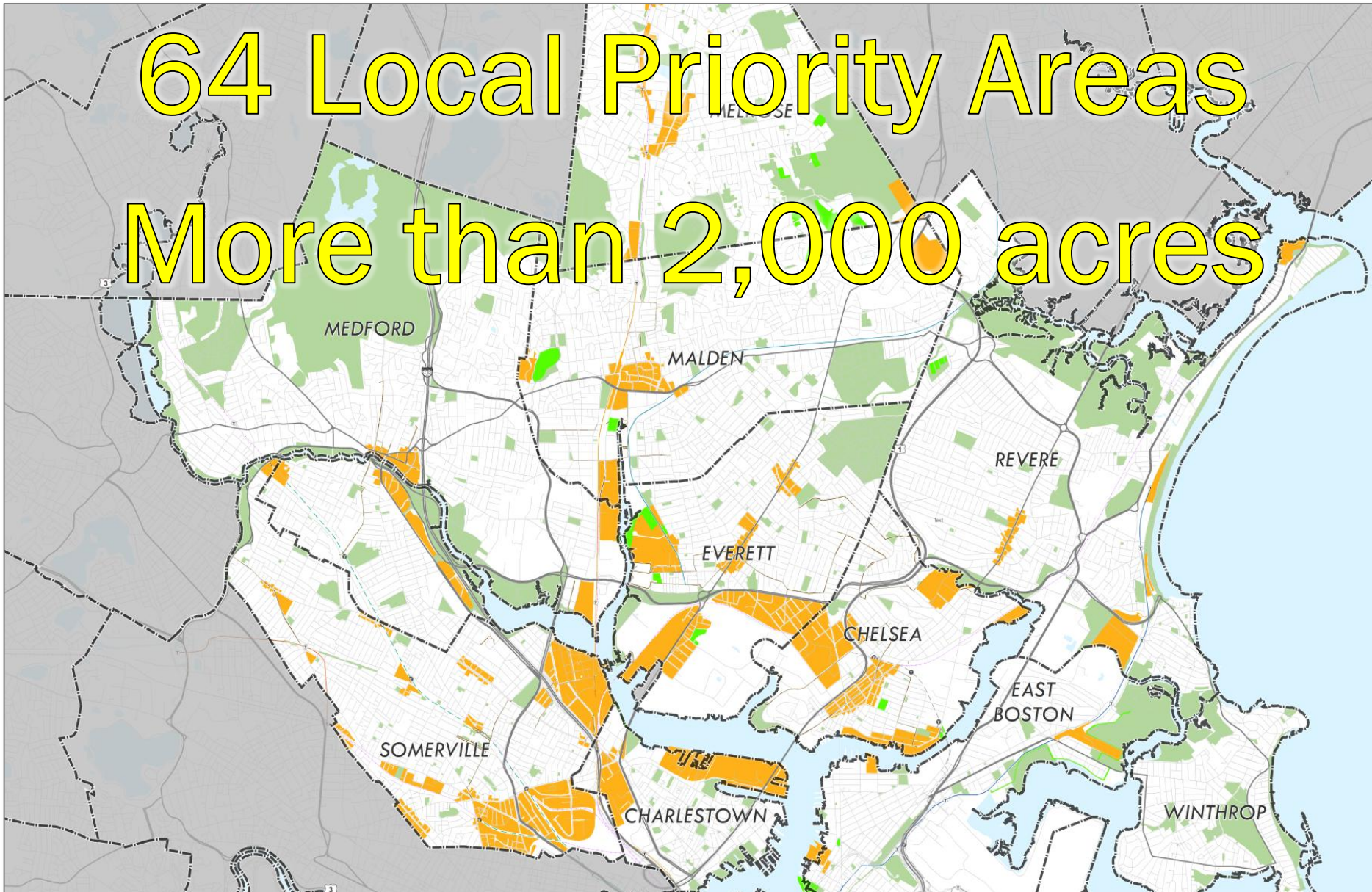
MBTA BUDGET CALCULATOR:
How Would You Fix the T's Budget?
Budget Deficit: \$ 161,000,000 You've filled: \$ 0

After a decade of chronic underfunding, the MBTA is facing a \$161 million gap in its budget for fiscal year 2013, which begins on July 1st. The T has proposed two different packages of fare increases and service cuts (Scenario 1 and Scenario 2), both of which have generated strong public opposition. See if you can figure out a better way to fix next year's budget by choosing what you think are the best options for raising revenue, cutting costs, and finding help from other state agencies. Click to learn more about how the T got here, and see their proposals to fill the gap.

	Savings or Revenue
Fare Increases	
Across-the-board fare increases	
<input type="radio"/> Scenario 1 fare increases (avg. 43%)	\$140.1 million
<input type="radio"/> Scenario 2 fare increases (avg. 38%)	\$114.2 million
<input type="radio"/> Increase an average of 20%	\$75.0 million
<input type="radio"/> Increase an average of 10%	\$41.0 million
The RIDE	
<input type="radio"/> Require fare \$1, premium fare \$12	\$3.7 million
<input type="radio"/> Require fare \$1, premium fare \$5	\$2.3 million
Service Cuts	
<input type="radio"/> Eliminate commuter rail after 10am and on weekends	\$1.7 million
<input type="radio"/> Eliminate weekend service on Green Line E branch and Waterbury trolley	\$1.8 million
Bus Cuts	
<input type="radio"/> MBTA Scenario 1 bus cuts	\$10.8 million
<input type="radio"/> MBTA Scenario 2 bus cuts	\$60.8 million
MBTA Non-Fare Revenue	
<input type="radio"/> Payment for existing parking rights	\$2.2 million

Priority Area Screening

64 Local Priority Areas
More than 2,000 acres



Priority Area Screening Results

29 sites
 1,200 acres
 9,000 housing units
 10 million sq. ft.
 commercial development



MetroNorth

Preliminary Regional
 Priority Development Areas
 and
 Priority Preservation Areas

Regional PDA Types

- Mixed Use Master Planned
- Mixed Use Infill
- Commercial
- Multifamily Residential
- Local PDAs

Regional PPA Types

- Urban Parks
- Natural Areas
- Local PPAs

Transit

- MBTA Rapid Transit
- Green Line Extension
- Silver Line Extension
- Commuter Rail
- Existing MBTA Station
- Proposed MBTA Station

Regional Assets

- Northern Strand Trail
- Locally Identified Walking Routes

- Municipal Boundary
- Open Space



Data Sources:
 MetroNorth towns and cities
 Metropolitan Area Planning Council (MAPC),
 Massachusetts Office of Geographic Information (MassGIS),



Questions? Comments?

Amy Cotter
Metropolitan Area Planning Council
acotter@mapc.org

